

DIRECTIONS TO HILLSIDE MEADOWS II



WWW.GRANTHOMESUSA.COM

FROM ROUTE 287 SOUTH-EXIT 36:

As you exit follow signs to Ridgedale Avenue North. Make a right at traffic light onto Ridgedale Avenue. Continue two more traffic lights and make a left onto East Hanover Avenue. Continue three traffic lights and make a left onto Speedwell Avenue/Route 202. Go to next traffic light and make a right onto Mill Road. Continue on Mill Road until the road ends (1/2 mile) and make a left onto Lake Valley Road. Continue on Lake Valley Road to the 1st Stop Sign and make a right onto Lake Road. Continue on Lake Road, and make your first right onto Holmes Court. Continue up the block to enter Hillside Meadows II.

FROM ROUTE 287 NORTH-EXIT 36B:

Exit 36B – Lafayette Avenue. At first traffic light make right onto Ridgedale Avenue. Go three more traffic lights and make a left on East Hanover Avenue. Go three more traffic lights and make a left onto Speedwell Avenue (Route 202). Continue 1 more traffic light. Make a right onto Mill Road and continue as above.

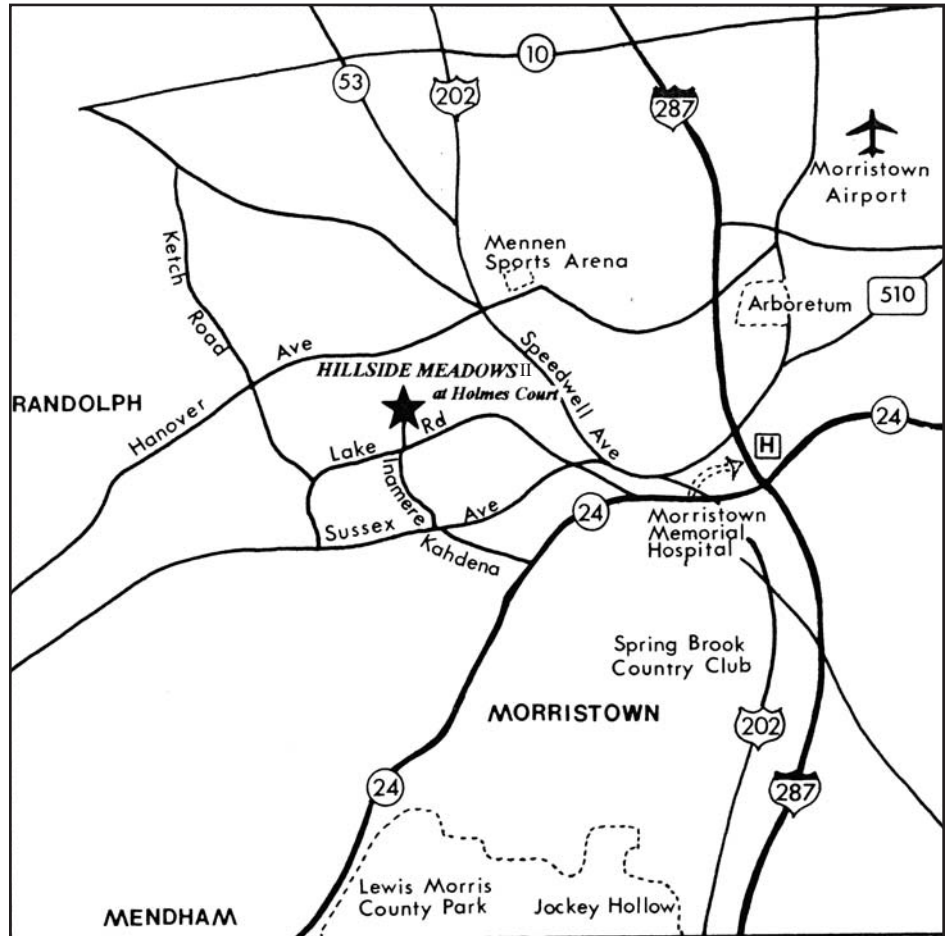
FROM ROUTE 10:

Take Route 10 into Morris Plains to Route 202 South towards Morristown. Continue on Route 202 South for 2.0 miles, or 7 traffic lights. At 7th light make a right onto Mill Road and continue as above.

FROM ROUTE 124/24 HEADING WEST:

After passing Morristown Green continue for 1.0 mile on Washington Street (Route 124) and turn right onto Kahdena Road (See Sign for Fosterfields). Continue to next traffic light and make a left onto Sussex Avenue. Then immediately make a right onto Inamere Road. Continue straight on Inamere Road, at stop sign cross over Lake Road to Holmes Court. Continue straight up the block to enter Hillside Meadows II.

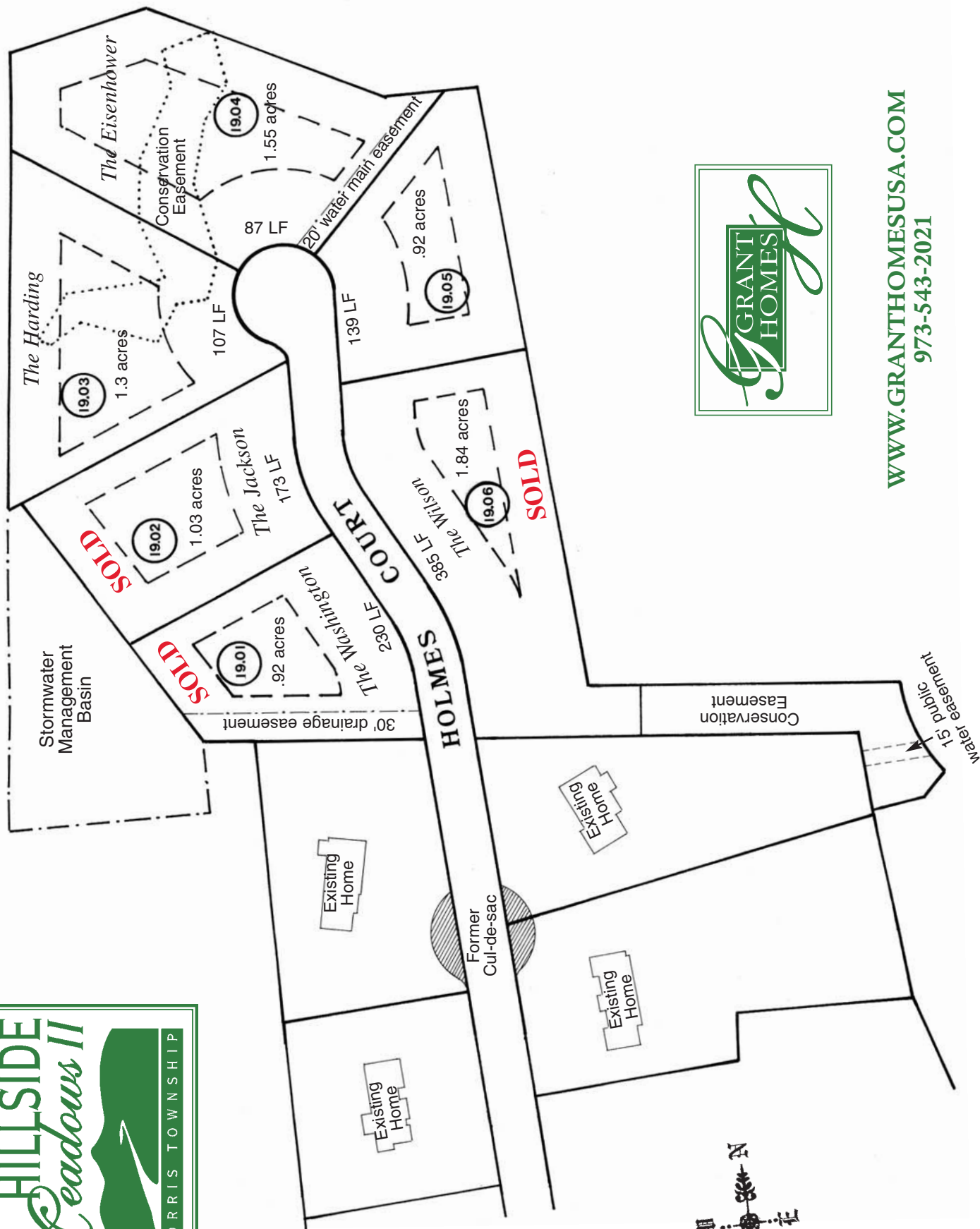
5 mile radius



50 mile radius



GRANT HOMES
973-543-2021



WWW.GRANTHOMESUSA.COM
973-543-2021